



Piano

Audition Submission Information and Guidelines 2024 The Jazz Exchange Summer Workshop

A brief overview of this year's audition process:

1. The audition submission window this year is **May 6th - June 3rd, 2024**
2. All auditions **MUST** be submitted on YouTube in one complete and uninterrupted video
3. For each section of the audition, prepare and record the portion of the music that applies to your skill level
4. Auditions will be judged first and foremost on accuracy, so please prioritize a portion of well-prepared material over performing everything (quality over quantity)
5. Our adjudicators at The Jazz Exchange will have a better sense of your skill level with more of the audition material recorded and submitted

Registration

All auditions must be submitted online for the 2024 Jazz Exchange Summer Workshop.

All registrations are to be filled out by the parent/guardian, NOT the student.

1. Before submitting any audition video, please make sure that you are registered by going to our website at <https://www.thejazzexchange.org/registrationsummer>

Video Uploading & Submission

The video audition submission window is **May 6th - June 3rd, 2024**;

To upload your video for your audition, please follow the instructions below:

1. Go to www.youtube.com (you have to create a YouTube account if you don't have one. If you have a Gmail account you automatically have a YouTube channel)
2. Click the **"Create"** button in the upper right corner and select **"Upload video,"** if necessary
3. To keep audition videos private, please be sure the privacy tab in the middle of the screen is set to **"unlisted"** (not "public" or "private"); this will only allow the video to be viewed by those who have a direct link
4. Click on **"Select files to upload"** and locate/select your video
5. Once the video begins to upload, please type your name and instrument into the **"title"** box
6. On the left side of the screen, toward the top, you will find your URL link just below **"Your video will be live at;"** this URL link will also be displayed in the middle of the screen as soon as the video is fully uploaded
7. Please copy this URL link paste it into an email and send it to thejazzexchangecontact@gmail.com with the subject title **"Student Name-Instrument-Date"** (ex. Jessica Ramos - Alto Sax - 2024 Audition)

Audition Guidelines

Please carefully read through all the information below, as your audition will not be considered if these guidelines are not followed

1. The audition submission window is open from **May 6th - June 3rd, 2024**, for all programs; for your audition to be given full consideration, you must submit within this submission window
2. Any auditions submitted after June 3rd will only be considered based on instrument availability of the Summer Workshop
3. All auditions must be submitted as a YouTube link via email (see video uploading & submission instructions above)

4. Videos from a phone or similar device are completely acceptable as we are most interested in your playing and not the quality of the video
5. **All auditions must be video recorded in one uninterrupted, unedited segment**
6. If you are interested in playing a second instrument in the program, you must submit a separate video for each instrument. As priority must be given to any student on their primary instrument, Jazz Exchange cannot guarantee proper placement on secondary instruments
7. **Auditions should be approximately 6-7 minutes in length, and shall not exceed 10 minutes at the maximum**
 - a. At the beginning of your video, please state your name, age, grade, and school
 - b. Each audition will consist of four sections (*Please note Rhythm Section Instruments will have slightly different audition sections):
 - i. Scales and arpeggios
 - ii. Blues and improvisation
 - iii. Ballad
 - iv. Big band excerpts
 - c. **DO NOT use a metronome for any sections of the audition**
8. ***IMPORTANT:**
 - a. *For each section, record only as much as you are comfortable and prepared to play. Auditions will be judged first and foremost on accuracy, so please prioritize a smaller portion of well-prepared material over performing everything (quality over quantity). However, Jazz Exchange will have a better sense of your skill level with more material presented. As this is a placement audition, we do not need to hear you perform everything perfectly but instead are looking to understand the best placement for your optimal learning experience*

Detailed Audition Submission Information

Please prepare your audition using the audition packet specified for your instrument specifically. Also, note below any specifications for your specific instrument.

Scales & Arpeggios

1. Only perform the scales or arpeggios that you are comfortable playing
2. ACCURACY is the primary element for judging scales; speed/ technique will be taken into consideration, but only if the scale/ arpeggio is played correctly
3. Play multiple octaves, when applicable

Blues & Improvisation

1. Please select one of the two blues options, either **Bags' Groove** or **Blues For Alice** – more advanced students who wish to demonstrate their abilities on chord progressions are encouraged to select Blues For Alice
2. Play the melody to **Bags' Groove** or **Blues For Alice** one time in the range most comfortable for you on your instrument
3. Improvise for two choruses of the form
4. If you currently do not improvise at all, please state that on the video before you perform, and play the melody to Bags' Groove with the recording; we strongly encourage everyone to attempt an improvised solo
5. For accompaniment:
 - a. For **Bags' Groove** use track 7 (Blues in key of Bb concert) from Jamey Aebersold's How To Play Jazz & Improvise, Volume 1:
 - i. Download here:
<https://drive.google.com/file/d/1NUw3UWhAwNHRt0Aga1kkFsFzBVHljuQt/view?usp=sharing>
 - b. For **Blues For Alice** use track 12 (Bird Blues) from Jamey Aebersold's Nothin' But Blues, Volume 2:
 - i. Download here:
<https://drive.google.com/file/d/1ADrMNWteyLI-Y09wNoHLZJVO1WAI41iG/view?usp=sharing>

Ballad

1. Using the attached lead sheet for your instrument, perform the melody to **I Can't Get Started**, unaccompanied;
2. The melody may be embellished, but should still be recognizable;
3. The primary objectives for this portion of the audition should focus on consistent time, strength of sound, and phrasing.

Big Band Excerpt

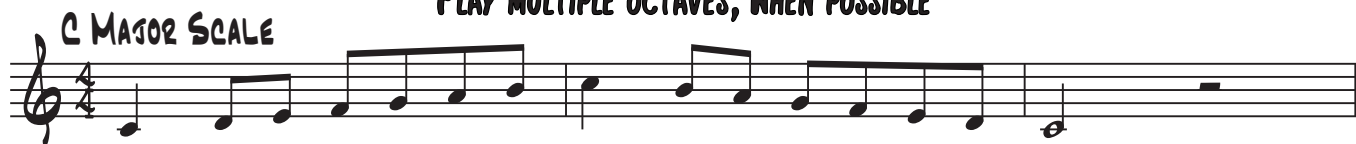
1. With the exception of anyone very new to their instrument, all students should include **Big Band excerpt #1** in their audition; we strongly encourage all students to also attempt **Big Band excerpt #2**
2. Please pay close attention to the notated tempo and style for each piece

For Any Questions Contact:

1. The Jazz Exchange Staff at thejazzexchangecontact@gmail.com or contact@thejazzexchange.org

JAZZ HOUSE AUDITION SCALES & ARPEGGIOS

PLAY MULTIPLE OCTAVES, WHEN POSSIBLE



PLAY AS MANY OF THE FOLLOWING SCALES AS POSSIBLE:

C MAJOR

G MAJOR

B \flat MAJOR

A MAJOR

B MAJOR

D \flat MAJOR



PLAY AS MANY OF THE FOLLOWING ARPEGGIOS AS POSSIBLE:

D MAJOR 7 (D Δ 7)

G DOMINANT 7 (G7)

A MINOR 7 (A-7)

E MINOR 7 \flat 5 (E-7 \flat 5)

****PLEASE PLAY ONLY ONE OF THESE TWO PIECES FOR THE IMPROV SECTION****

BAGS' GROOVE

PLAY MELODY IN ANY COMFORTABLE REGISTER

MILT JACKSON

Chords: Eb7, Bb7, Cmin7, F7, Bb7

BLUES FOR ALICE

CHARLIE PARKER

Chords: Fmaj7, Eb7, A7(b9), Dmin7, G7, Cmin7, F7, Bb7, Bbmin7, Eb7, Amin7, D7, Abmin7, Db7, Gmin7, C7, Amin7, D7, Gmin7, C7

I CAN'T GET STARTED

PLAY, AS WRITTEN BELOW, THE BRIDGE AND LAST A OF THE FORM

E^{MIN7} A⁷ D^{MA^b7}



D^{MIN7} G⁷ E^{MIN7} A⁷ D^{MIN7} G⁷



C^{MA^b7} A^{MIN7} D^{MIN7} G⁷ E⁷ A^{MIN7} D^{MIN7} G⁷



C^{MA^b7} A^{MIN7} D^{MIN7} G⁷ C^{MA^b7} D^{MIN7} G⁷



Piano

Big Band Excerpt #1 Swing $\text{♩} = 120$

Handwritten piano accompaniment for Big Band Excerpt #1, measures 33-45. The music is in a key with three flats (B-flat major or D-flat minor) and a 4/4 time signature. The notes are mostly slurred and have a rhythmic pattern of eighth notes. Chord symbols are written above the staff.

Measures 33-36: $Bb9$, $Eb9$, $Ab6$, $AbMAJ,7$

Measures 37-40: $Ab13$, $DbMAJ,7$, $Db6$

Measures 41-44: $DbMAJ,7$, $Db6$, $Gb13$, $Ab6$, $Gb9$, $F9$

Measures 45-48: $Bb9$, $Eb9$, $Bbm7$, $E7+9$, $Eb9$, 1

Big Band Excerpt #2

Swing $\text{♩} = 210$

Handwritten piano accompaniment for Big Band Excerpt #2, measures 25-37. The music is in a key with three flats (B-flat major or D-flat minor) and a 4/4 time signature. The notes are mostly slurred and have a rhythmic pattern of eighth notes. Chord symbols are written above the staff.

Measures 25-28: $F\sharp-7$, $F7$, $Bb9$, $Eb+7$, $A\flat+7$

Measures 29-32: $E\flat-A\flat7$, $D\flat$, $D-G+7$, $C-$, $F7$

Measures 33-36: $A\flat$, $C+7F9$, $B\flat-B-$, $E A9$, $A\flat G\flat$, $F+7$, $B\flat-B-$, $E+7$, $A+7 D+7$

Measures 37-40: $D\flat$, $F G\flat$, $C-$, $G\flat7 F7$, $B\flat-$, $E\flat7sus4$, $E\flat9$

Measures 41-44: $A\flat$, $A\flat$